

You are cordially invited to visit my Cambridge Open Studios Exhibition. Details as below. I look forward to greeting you.



to my Cambridge Open Studio

OPEN ALL FOUR WEEKENDS IN JULY 2015

4TH -5TH , 11TH -12TH , 18TH -19TH , 25TH -26TH .

**OPEN 11.00AM TO 6.00PM
SATURDAYS AND SUNDAYS**

**18 HARBOUR AVENUE,
COMBERTON
CAMBRIDGE
CB23 7DD**

Tina Bone

Wildlife and Botanical Artist

Illuminated Lettering with Gold Leaf



FRAMED ORIGINALS AND PRINTS

As displayed. I shall be working on current paintings during COS

Credit Card payments available (cheques also accepted)

FRAMED COMMISSIONS

Recent and historical Commissioned artwork is hung in the Chinese Dining Room, with kind permission of the owners.

LIMITED EDITION PRINTS

Mounted Limited and Open Edition prints in baskets and browsers are dotted around.

BOX CANVAS PRINTS

Box Canvas Prints of paintings and photographs.

GOODS AND GIFTS PRODUCED FROM MY ARTWORK

Old favourites and some new items are for sale as follows

- **CALENDARS AND DIARIES:**

A3 (half) Hanging Calendar 148mm wide x 420mm tall. £9.50

A4 Hanging Calendar 210mm wide x 297mm tall. £7.50

A5 Hanging Calendar 148mm wide x 210mm tall. £5.00

A5 Desk Book Calendar 148mm wide x 210mm tall. £5.00

DL Triangular Desk-top Calendar. Approx. 210mm wide x 120mm high. £4.00

A5 Desk-top calendar in plastic case. 215mm wide x 150mm tall. £5.00

DL Desk-top calendar in plastic case. 190mm wide x 110mm high. £4.00

CD-size Desk-top calendar in plastic case. 125mm wide x 140mm tall. £3.50

A5 Annual Desk Diary 148 mm wide x 210 mm tall, wire-bound £12.50

- **CARDS, POSTCARDS, NOTELETS - NOTELET PACK OF 6, SAME DESIGN**

- **COFFEE TABLE BOOKS: HARDBACK A4 £15.50**

- **NOTEBOOKS: A4 £10.00, A5 £7.50. NOTEPADS: £3.00**

- **CAMBRIDGE CERAMIC EARTHENWARE MUGS: £8.50 EACH.**

Capacity 330ml, height 90mm, diameter 80mm. Dishwasher and microwave proof. Twelve Designs, Nature's Gems series – a picture on one side with a poem on the other – one picture for each month of the year. **Examples on show to order**

- **GLASS CHOPPING BOARD £25 EACH**

Large Glass Chopping Board. Size approximately 390mm x 285mm. Tempered glass, dishwasher safe. Magnolia Range. **Examples on show to order**

- **PUZZLES**

Diwejisaw Magnetic Puzzle 'Through the leaded Window Series', £14 each.

Traditional 2mm Cardboard Jigsaw Puzzle. 1,000 pieces, seven designs £13 each

Wentworth Whimsy Jigsaw Puzzle. Two designs, direct from Tina's Fine Art.uk - 140p £14. (RRP £17.95); Direct from Tina's Fine Art.uk - 250p £18. (RRP £26.95); Direct from Tina's Fine Art.uk - 300p £21. (RRP £29.95)

- **SNAP & NAME THE BIRD EDUCATIONAL CARD GAME. £13 PER PACK**

- **WRAPPING PAPER AND TAGS**

High quality wrapping paper and card tags with white silk ribbon ties

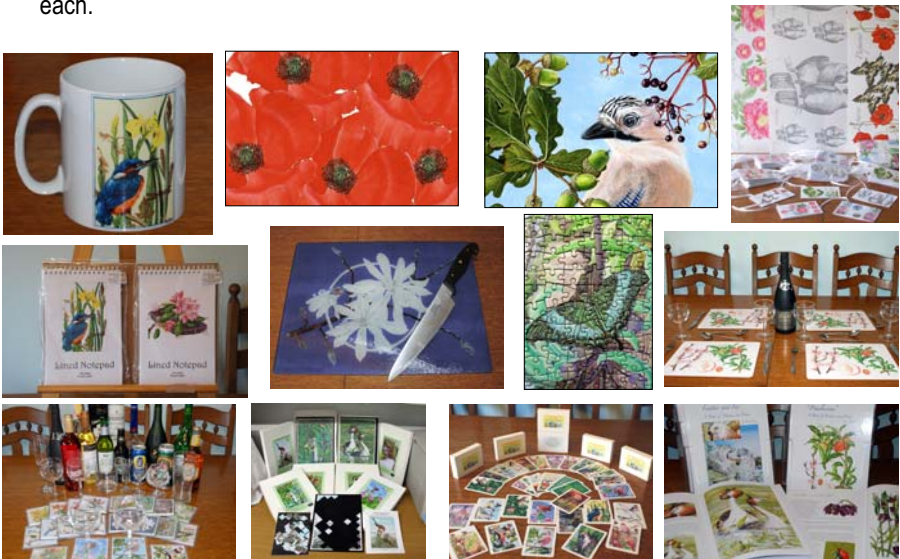
A2 Sheet and tag £2.50

A3 Sheet and tag £1.50

- **COASTERS AND PLACEMATS**

Handcrafted Acrylic Coasters. Set of four in a box. Suitable for hot and cold drinks. 100mm x 100mm. Seven design sets. £8 per set

Large Placemats. Traditional cork-backed placemats with a matt laminated surface, rounded corners and hand finished edges. Size 290mm x 230mm. Four designs. £6 each.



EXHIBITIONS TO THE END OF 2015

PLEASE VISIT MY WEBSITE FOR FURTHER DETAILS:

<http://tinasfineart.uk/exhibitions/>

AUGUST 2015: 12th to 16th August 2015. Hinchingsbrooke Country Park, Huntingdon.

Exhibition collaboration between Creative Coverage and Hinchingsbrooke. PE29 6DB.

AUGUST BANK HOLIDAY 2015: 29th, 30th and 31st August 2015. The Fenland Country Fair takes place at Stow cum Quy Park, which is located five miles east of Cambridge, just off the A14 (A1303 junction). I will have a stand in the Craft Marquee.

9th to 28th SEPTEMBER 2015: Exhibition collaboration between Creative Coverage and Fisher Theatre Gallery, Bungay, Norfolk. Broad Street, Bungay NR35 1EE

13th SEPTEMBER 2015: SUFFOLK SPECTACULAR & COUNTRY FAIR The 2015 Spectacular will be held on SUNDAY 13th SEPTEMBER 2015. A CELEBRATION OF SUFFOLK HEAVY HORSES at The Elveden Estate, Elveden, Thetford, IP24 3TQ.

26th SEPTEMBER 2015: Gransden and District Agricultural Society Annual Show (est. 1891): Please come and see me in the Art and Craft Marquee. SG19 3AN.

OCTOBER 2015: Art Unequaled, Ely. Art Unequaled. 17th and 18th October 2015. The Maltings, Ship Lane, Ely, Cambs CB7 4BB.

NOVEMBER 2015: Swaffham Visual Arts Festival 2015 Art Exhibition, 6th, 7th and 8th November. Market Place, Swaffham PE37 7DQ.

ONGOING: PAXTON PITS NATURE RESERVE: Cards and Coasters Paxton Pits Nature Reserve. PE19 6ET

ONGOING: THE DARRYL NANTAIS GALLERY: 59 High Street, Linton, Cambridge, CB21 4HS. Telephone: 01223 891289 Opening time: Tuesday - Friday 10a.m.-3p.m. Saturday 12 - 4p.m.

